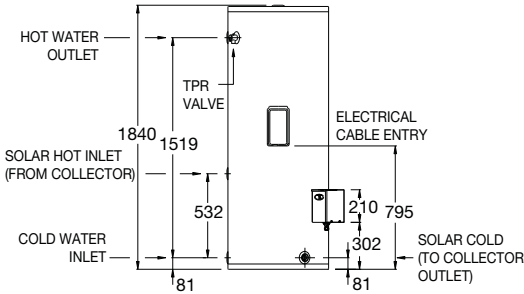
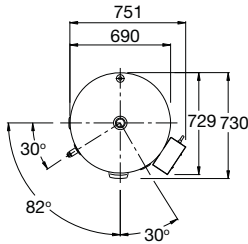




### Features & Benefits

- Split System design – vitreous enamel lined cylinder installed at ground level
- Limited frost protection<sup>4</sup>
- Booster – choice of electric element or 6-Star continuous flow gas
- 2, 3 or 4 NPT200 or 2 or 3 LCS collectors
- Eligible for STCs<sup>5</sup>
- 5 year cylinder warranty<sup>1</sup>



MODEL	511410
Storage Capacity (L)	410
Solar Collectors	2, 3 or 4 NPT200, 2 or 3 LCS
Booster Type	Electric or Gas
Element size (kW)	3.6
Weight Empty (kg) - Tank	115
Water Connections	Rp <sup>3</sup> / <sub>4</sub>



Scan code for details & installation instructions

