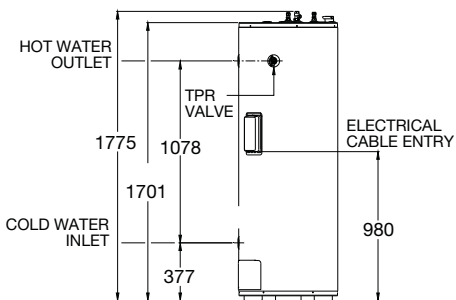
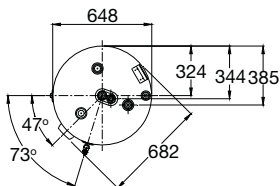


### Features & Benefits

- Complete Frost Protection – Unique Drain-Back™ heat exchange technology
- Complies with regulations in all states
- Booster – electric element
- Full Mains Pressure for multiple outlets
- 2 or 3 SPA2000 or CSA2007 collectors
- Eligible for STCs<sup>5</sup>
- 5 year cylinder warranty<sup>1</sup>



MODEL	591270
Storage Capacity (L)	270
Solar Collectors	2 or 3 SPA2000 2 or 3 CSA2007
Booster Type	Electric
Element size (kW)	3.6
Weight Empty (kg) - Tank	168
Weight Empty - (kg) Solar Collector (kg each)	48
Water Connections	Rp 3/4



Scan code for  
details & installation  
instructions

